

Environmental Stewardship Plan



Laying the Foundation | Community Workshop

October 1, 2019

Warm Up – What Does Environmental Stewardship Mean to You?

Use the materials at the table to build our community collage.
Choose an image, a quote, write your own response, draw – be creative

Meeting Objectives

Key Question:

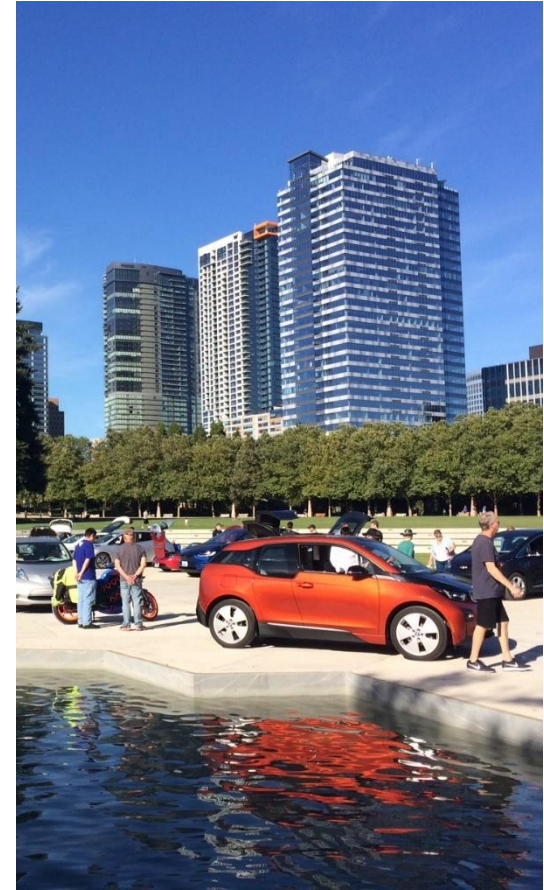
- How can the City of Bellevue build on its past success and continue to make progress on our environmental stewardship goals?

Meeting Objectives:

- Introduce the **Environmental Stewardship Plan** and our progress to date.
- **Discuss** your values and priorities around **environmental sustainability**.
- **Gather input** on how **ambitious** the City of Bellevue should be around **sustainability**, and how to **prioritize** actions.

Agenda

6:00	Doors Open
6:35	Welcome and Overview
6:40	Activity #1. What does environmental stewardship mean to you?
6:50	Presentation: Environmental Stewardship Plan Overview
7:10	Activity #2. Exploring our values around environmental stewardship.
7:30	Presentation: Thinking about our Goals
8:10	Activity #3. Dot voting and discussion
8:30	Thank you & adjourn



Expectations for the Workshop

- Be present.
- Be open-minded.
- Don't be afraid to ask questions.
- Be respectful.
- Have fun!



Introductions

- Say your name.
- Share insights from visualization exercise



Discussion



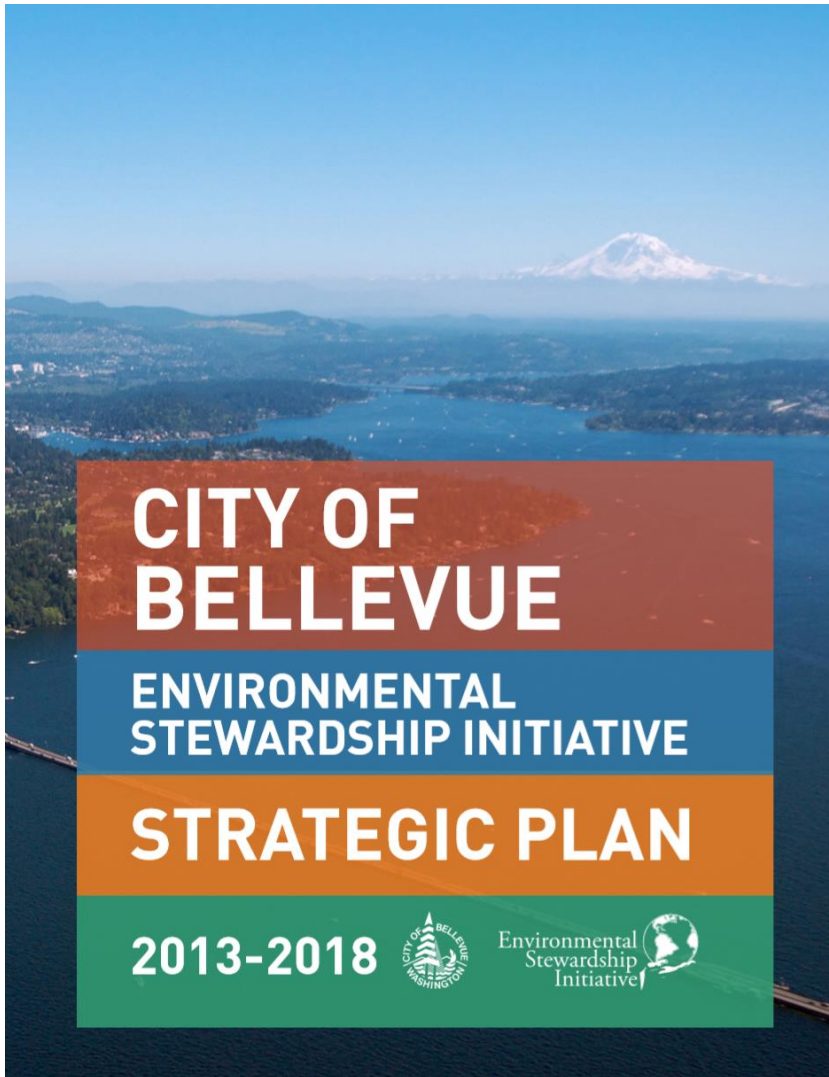
- What strikes you about the final collage?
- How did it feel to answer the question in this way?



Building on our Progress



Building on a Foundation



- Environmental Stewardship Initiative Started in 2007
- Mayors Climate Protection Agreement
- Joined King County in Cities Climate Collaboration (K4C)
- 2013-2018 ESI Strategic Plan: Made Progress on 96% of the strategies

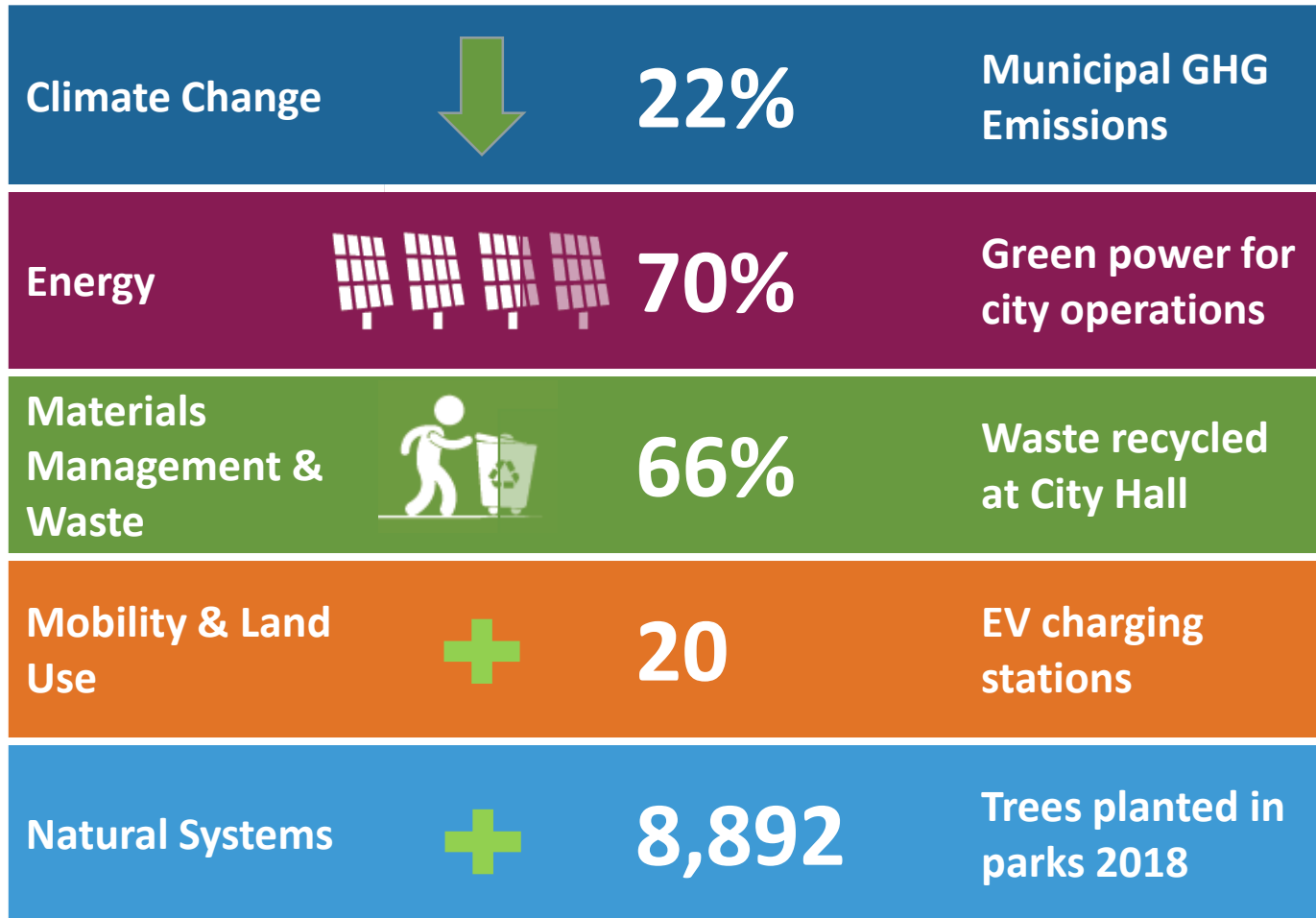
Progress To Date

Communitywide Goals



Climate Change		9%	Community GHG Emissions (2011-2018)
Energy		384	Solar arrays
Materials Management & Waste		41%	Waste recycled or composted
Mobility & Land Use		5k	Electric vehicles registered
Natural Systems		37%	Tree Canopy

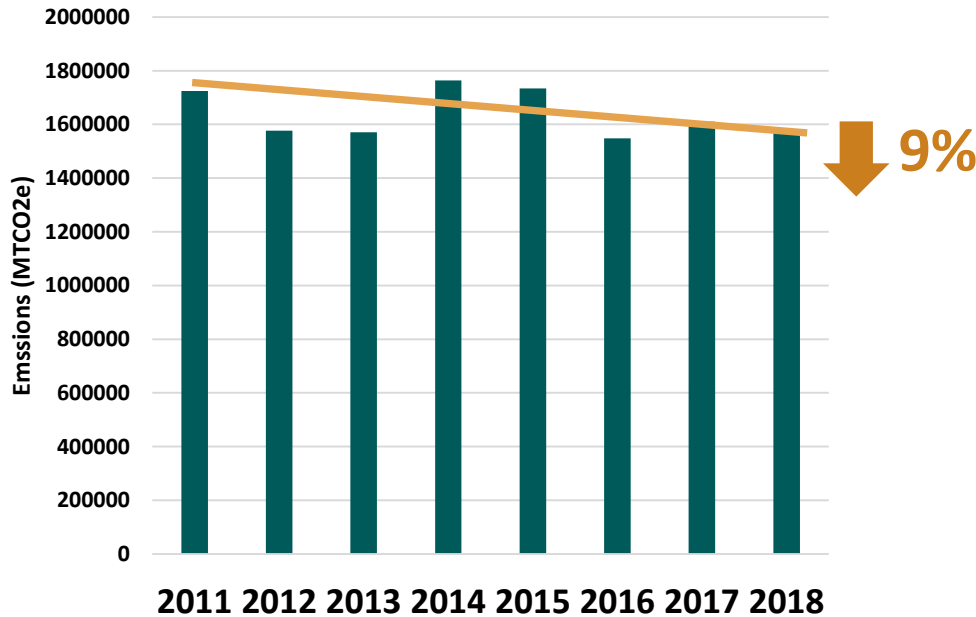
Progress To Date Municipal Operations



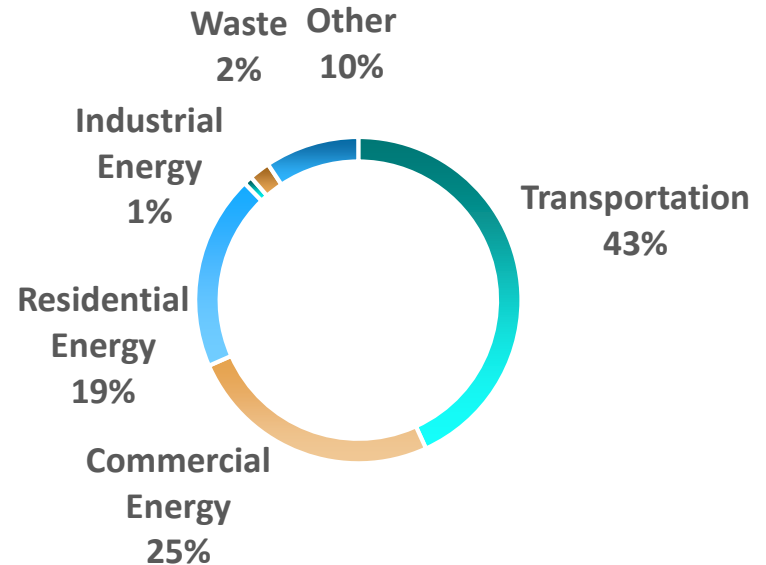
Greenhouse Gas Emissions Trends



Community GHG Emissions (MTCO₂e/year)



Community Emissions Sources





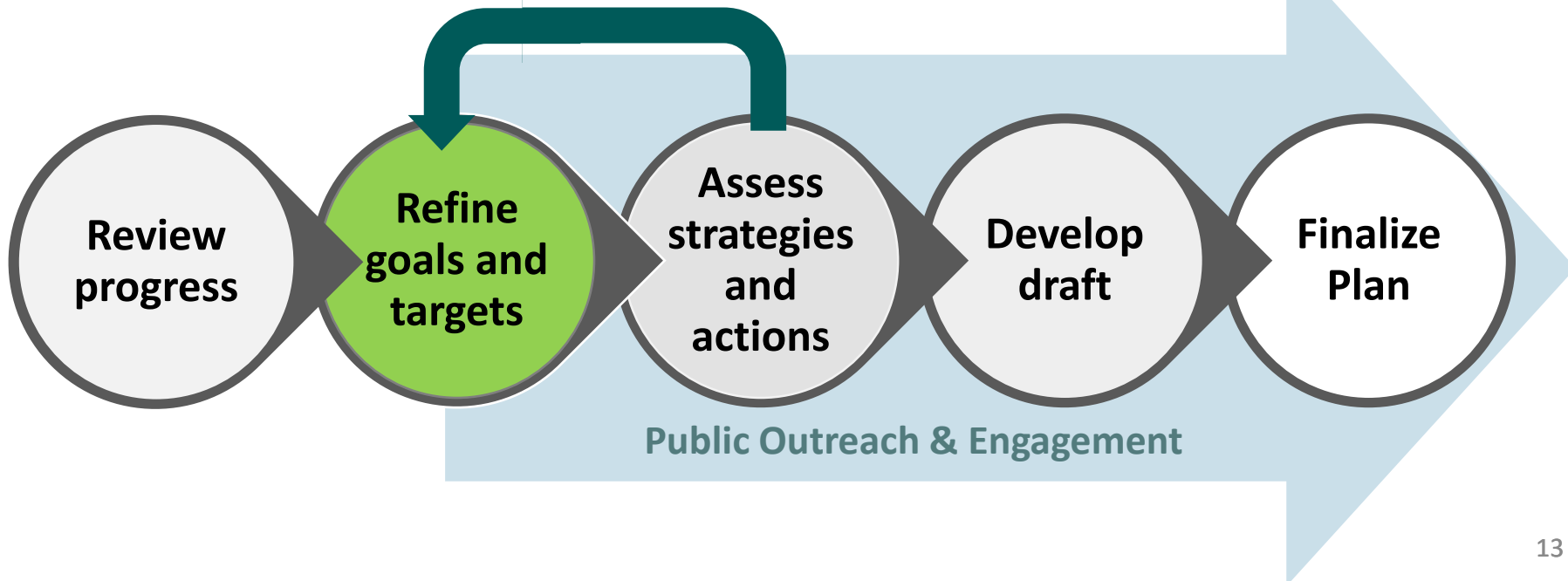
Questions?



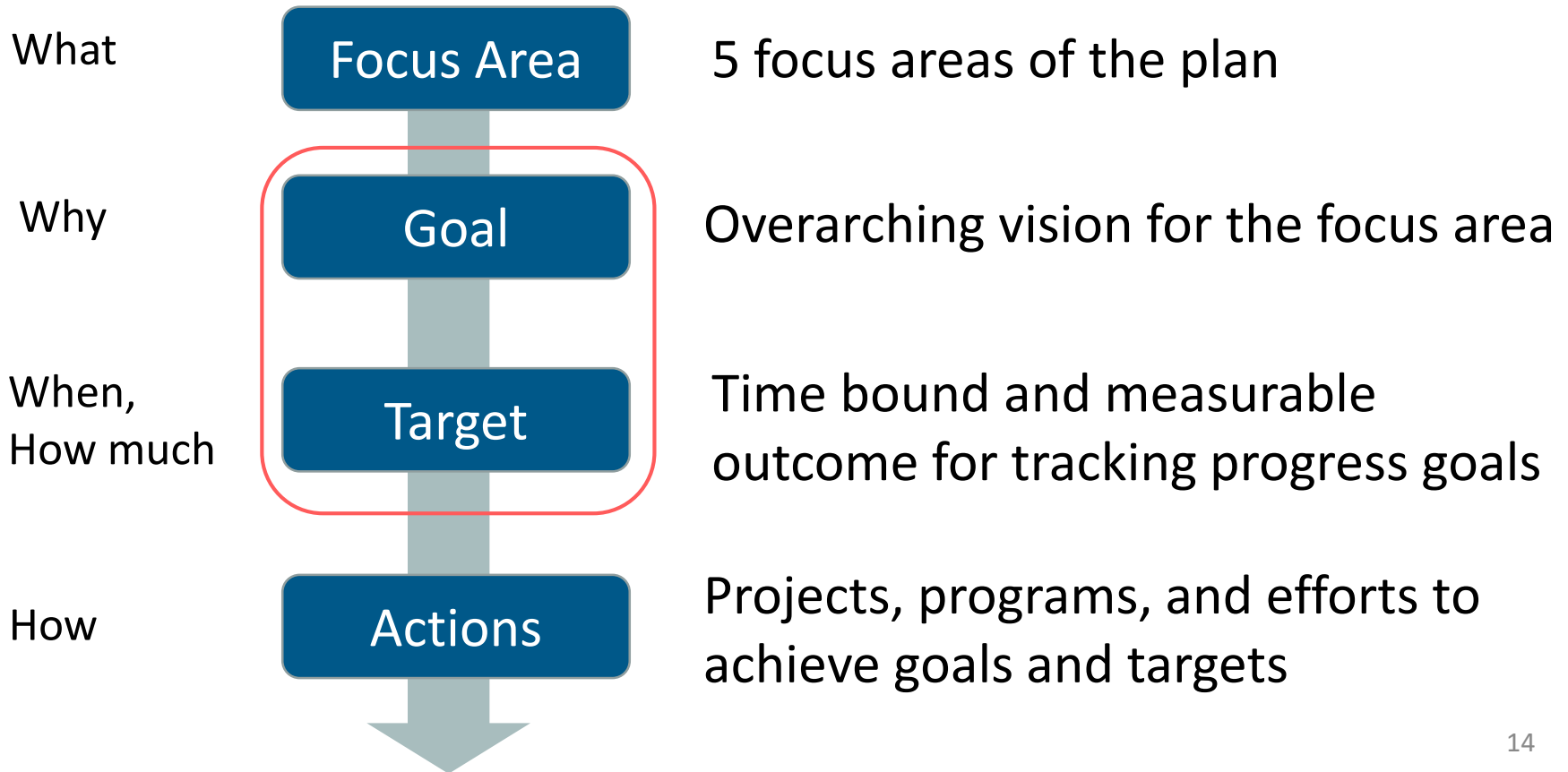
Environmental Stewardship Plan Update Process

City Council Vision Priority #11

Review progress of ESI and analyze additional steps the City may take to achieve its environmental goals.

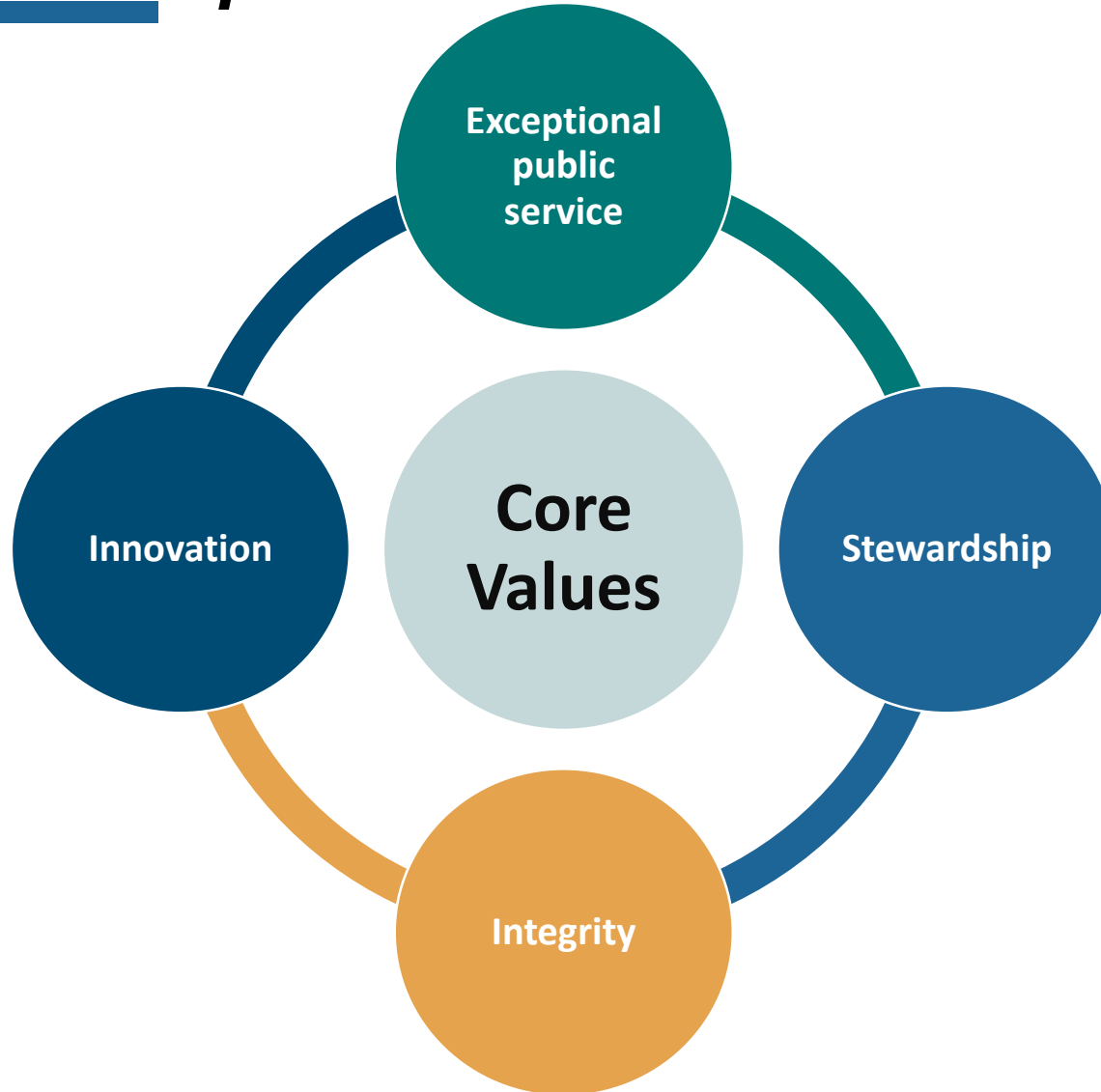


Plan Components



Bellevue's Core Values

Why is this important?



Why we act

Benefits



Healthy, livable
communities



Local, green
jobs



Resiliency to
economic +
environmental
changes



Healthy, beautiful
natural systems



More
transportation
options



Long-term
cost savings



Values Exercise

When it comes to taking action, how should the City balance key values used to make decisions?



Discussion – Round 1



1. **Review** the values cards at your table.
2. Use your blank card to **add a value or consideration** you think should be included.
3. **Choose your top 3** values/considerations. These are values and considerations that motivate you personally.
4. **Discuss at your table** which values you chose and why.

Discussion – Round 2



1. **Review** the values cards at your table one more time.
2. **Choose the top 3** values/considerations **the city** should consider when making decisions about sustainability.
3. **Discuss at your table** which values you chose for the **city** and why.
4. Do you see any tensions between the values you chose for yourself and the ones you chose for the city?



Thinking About our Goals

- Goals: how does each focus area contribute to reaching our sustainability goals?
- Targets: how ambitious should we be going forward?



What level of ambition?

Stretch

A little more
than we do
now

Bold

Best
practice;
ambitious
commitment

Leading Edge

Most
ambitious

Examples:

- Nashville

- King County and K4C
- Kirkland
- Redmond
- Denver
- San Diego

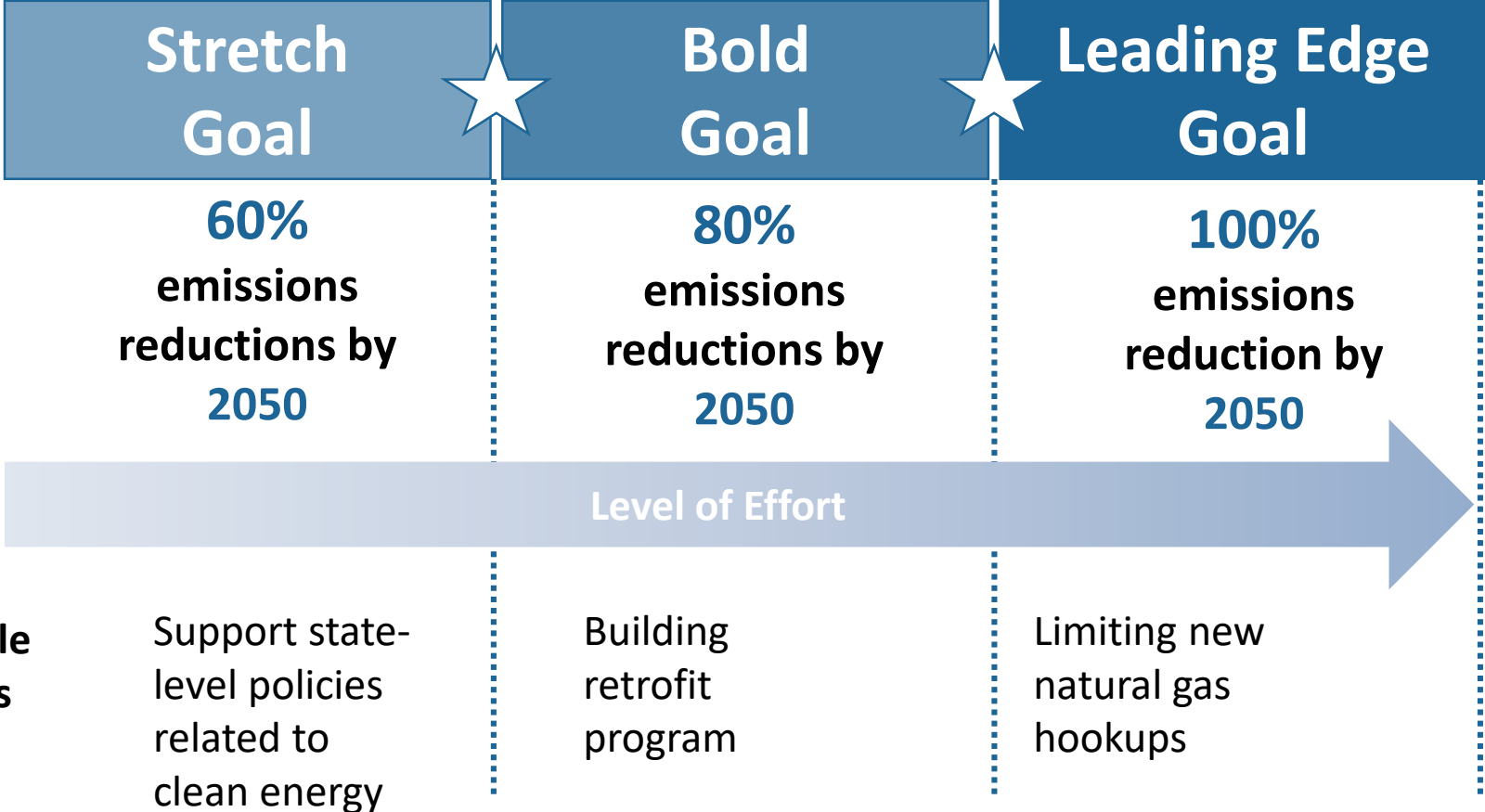
- Seattle
- Boulder, CO
- Vancouver, BC

2050 Target Options Community

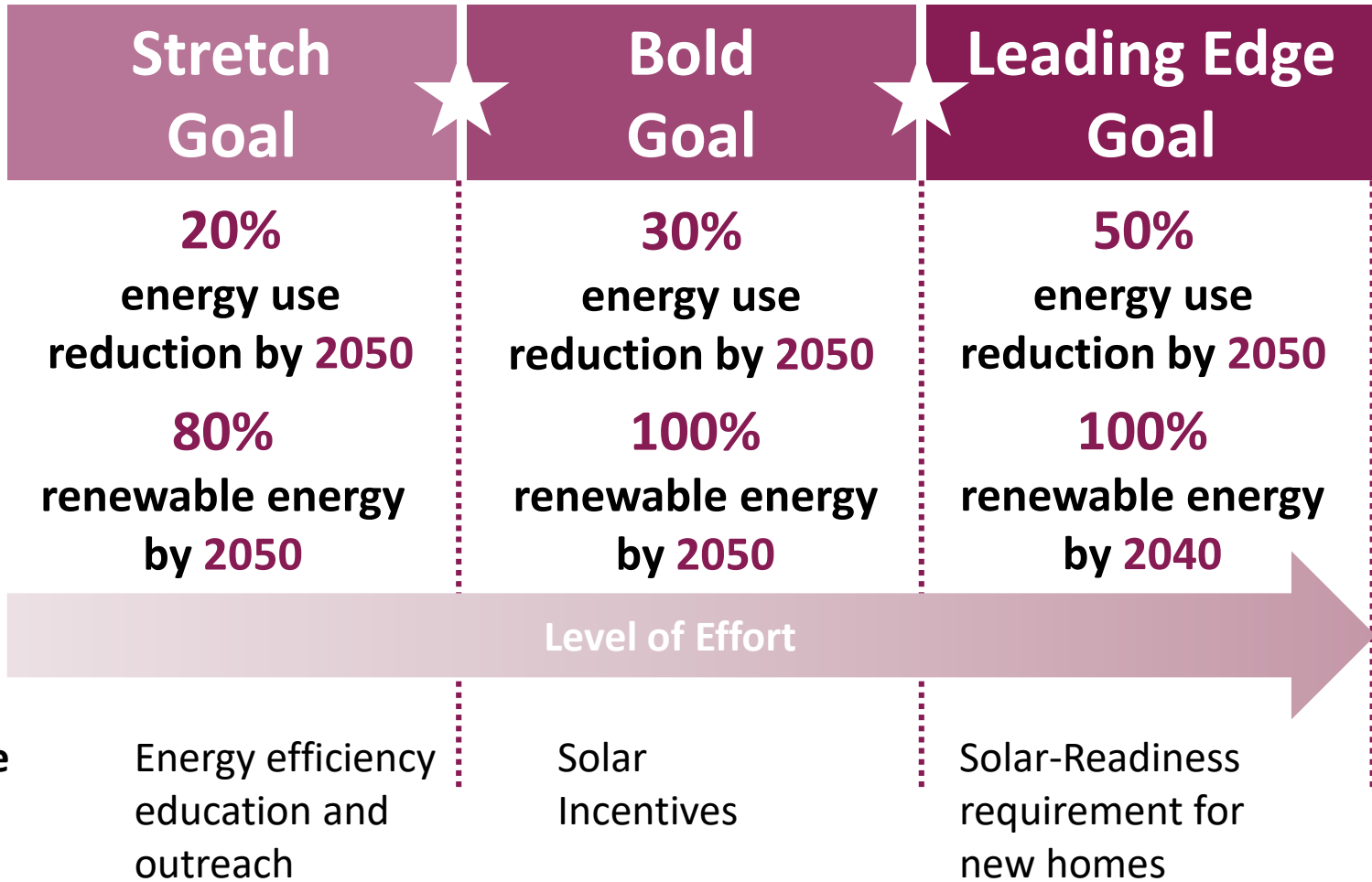


	Stretch	Bold	Leading Edge
Climate Change	60% GHG Reduction	80% GHG Reduction	Carbon Neutral
Energy	20% Energy Use Reduction	30% Energy Use Reduction	50% Energy Use Reduction
	80% Renewable Energy	100% Renewable Energy	100% Renewable Energy by 2040
Materials Management & Waste	50% Recycling	70% Recycling	Zero Waste
Mobility & Land Use	Drive Alone Rate: 55% residents	Drive Alone Rate: 45% residents	Drive Alone Rate: 35% residents
	40% EVs	50% EVs	60% EVs
	35% per capita VMT reduction	50% per capita VMT reduction	60% per capita VMT reduction
Natural Systems	40% Tree Canopy	40% Tree Canopy	40% Tree Canopy
	80% 1/3 mile to a park	90% 1/3 mile to a park	100% 1/3 mile to a park

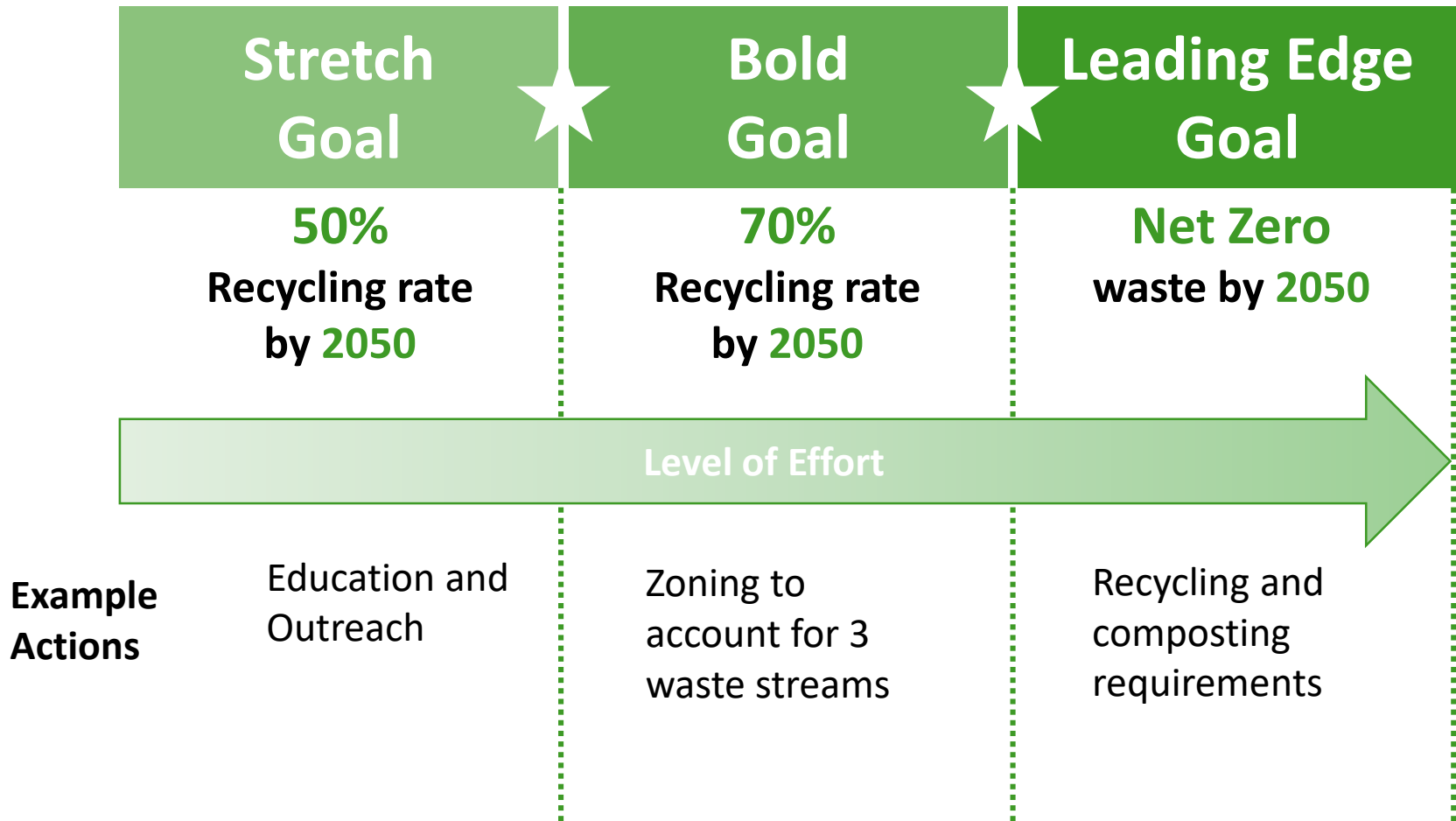
Climate Change Goals




Energy Goals



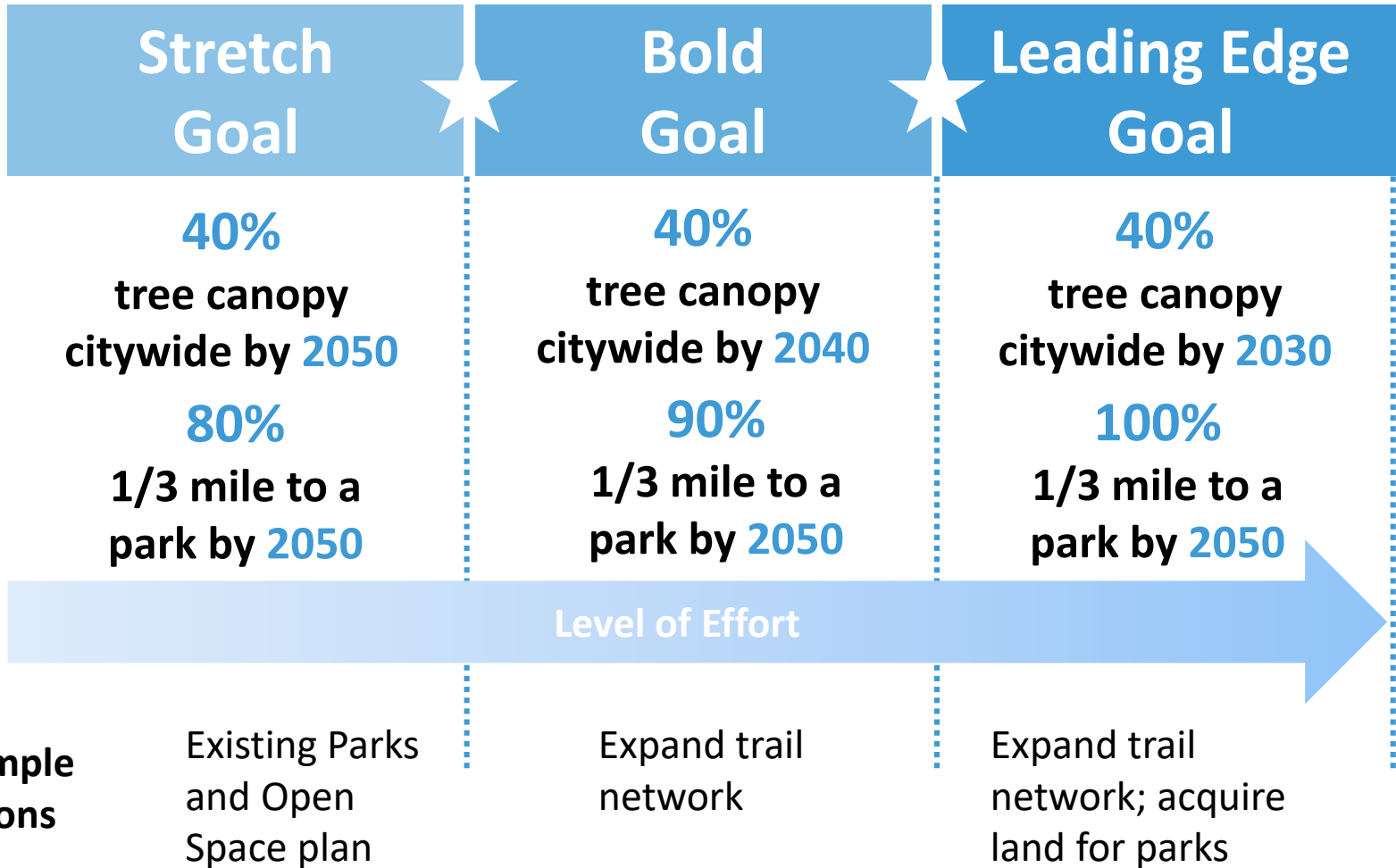
Materials Management & Waste Goals



Land Use & Mobility Goals

	Stretch Goal	Bold Goal	Leading Edge Goal
	<p>55% drive alone rate by 2050</p> <p>40% electric vehicles by 2050</p> <p>35% per capita VMT by 2050</p>	<p>45% drive alone rate by 2050</p> <p>50% electric vehicles by 2050</p> <p>50% per capita VMT by 2050</p>	<p>35% drive alone rate by 2050</p> <p>60% electric vehicles by 2050</p> <p>60% per capita VMT by 2050</p>
	<p>Level of Effort </p>		
Example Actions	Implement existing Transportation plans	Increased transit funding	Incentives for purchasing EVs

Natural Systems Goals





Questions?



Thinking About Our Goals



Directions:

1. Use the worksheet to select which set of goals you want to see Bellevue pursue for each of the focus areas.
2. Identify any community strengths/assets that can help us achieve those goals.
3. Identify any challenges or barriers to achieving our goals.
4. Are there additional considerations?



Voting Exercise

Directions:

1. Using your worksheet, select the goal for **each** focus area you think the City should pursue.
2. Place your dot next to the goal you want the City to pursue for each focus area on the its corresponding board.
3. If there are additional considerations we should consideration, add them to a post-it note and place them by/next to the corresponding focus area.