



## SUMMARY OF FINDINGS

Below is a summary of the data we collected on 168th Avenue SE south of SE 7th Street between 8/6/2019 and 8/12/2019.

## ROADWAY CHARACTERISTICS

### ROAD SPECIFICATIONS

168th Avenue SE is a 32 ft wide road with parking allowed on both sides. There are no sidewalks on either side of 168th Avenue SE.

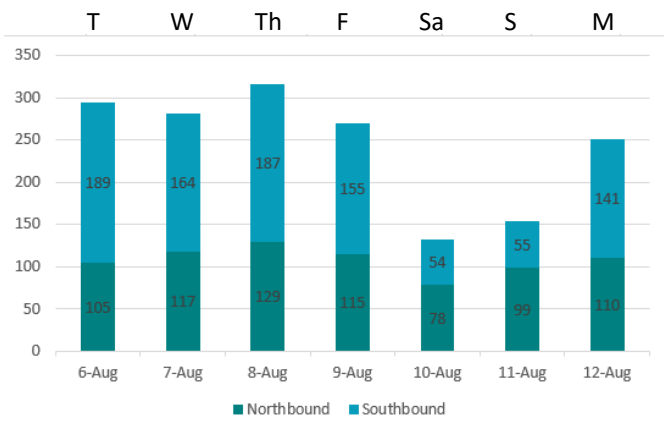
### RESIDENTIAL STREET

168th Avenue SE is a residential street in the Lake Hills/ West Lake Sammamish area. There are many residents in this neighborhood who use 168th Avenue SE to access their homes.



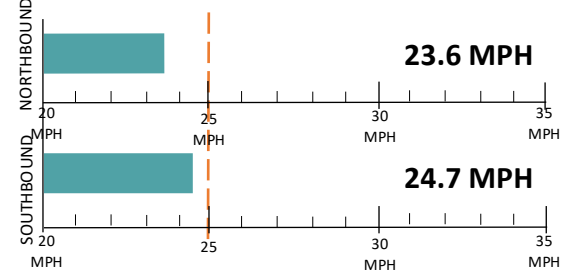
### DAILY TRAFFIC

The Mid-Week Average on 168th Avenue SE is **297** cars per day. Mid-Week Average includes data between Tuesday and Thursday.



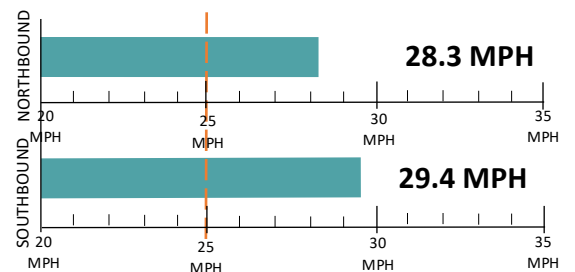
### SPEED STUDY

#### Average Speeds



#### 85th% Speed

85% of vehicles were traveling at or below this speed.



Speed Limit (orange line) | Car Speeds on 168th Avenue SE (teal bars)



### COLLISION HISTORY

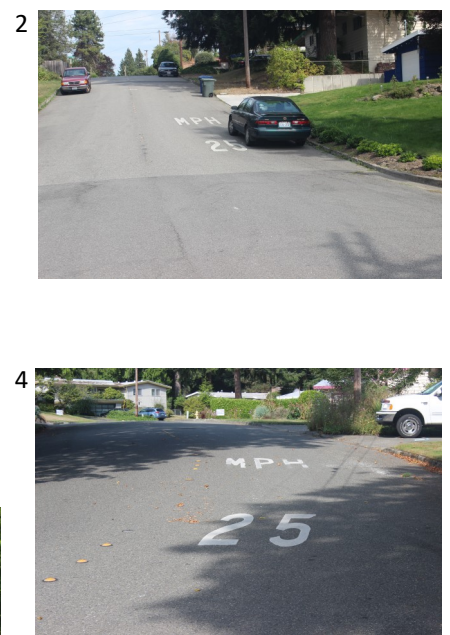
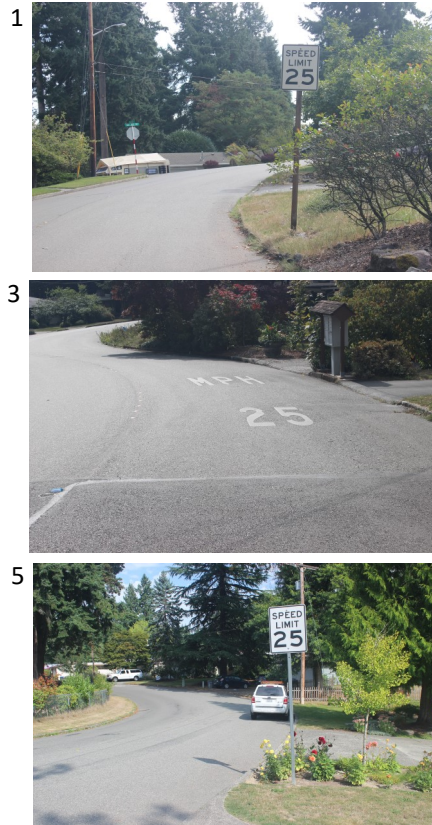
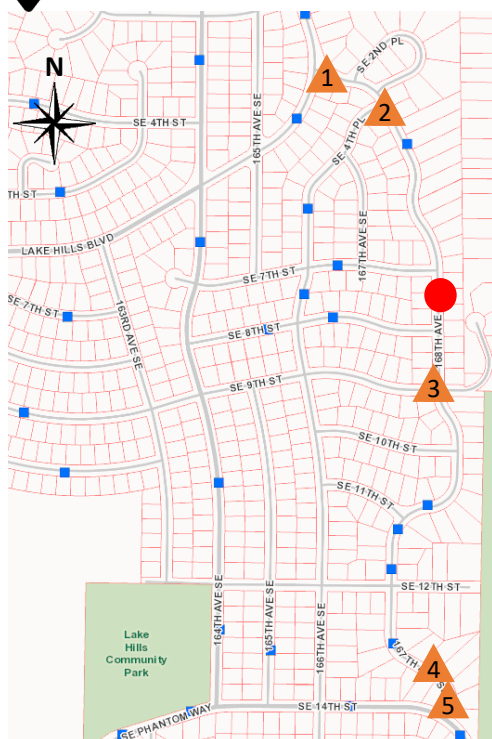
A three-year collision study was conducted along 168th Avenue SE between SE 7th Street and SE 8th Street. There was one collision reported. This collision involved a motorist having a medical issue and hitting a parked vehicle.



### FIELD REVIEW

#### KEY:

- Speed Study Location
- ▲ Speed Limit Pavement Markings and Signs





## RECOMMENDATIONS

Below are our recommendations for 168th Avenue SE south of SE 7th Street based on the field reviews, data collection, and engineering analysis. More detail on these recommendations are outlined in the **Residential Traffic Guidebook** ([Bellevuewa.gov/ResidentialTrafficGuidebook](http://Bellevuewa.gov/ResidentialTrafficGuidebook)). By educating the community and encouraging safe driving, we can begin to change driver behavior and reduce vehicle speeds.



**EDUCATE THE COMMUNITY**



**REDUCE EXCESSIVE VEHICLE SPEEDS**



**IMPROVE PEDESTRIAN AND BICYCLE SAFETY**



### TRAFFIC SAFETY YARD SIGNS



This program involves lending communities portable signs that encourage motorists to respect the neighborhood, drive responsibly, and drive 25 mph. The signs are moved by community volunteers from place to place throughout the neighborhood every few days.



### RADAR DOLLY



You can borrow and place a radar dolly on your street for up to two weeks. This unit gives motorists feedback on the speed at which they are driving on a digital reader board, encouraging them to obey the speed limit. Should you like to borrow the radar dolly, please request it by calling (425) 452-6457 or sign up on [Bellevuewa.gov/RadarDolly](http://Bellevuewa.gov/RadarDolly). Once we receive a request, City staff will contact you to make arrangements for both the drop-off and pick-up of the radar dolly at your home.

## VISION ZERO



Bellevue’s Vision Zero initiative reflects the city’s commitment to reduce traffic deaths and serious injury collisions on city streets to zero by the year 2030. In 2015, the City Council passed a resolution providing a framework to achieve this goal. It states "the life, safety and health of residents, employees and visitors to Bellevue is the City Council's highest priority." **By participating in one of the recommendations above, you are helping the City of Bellevue in our efforts to make our streets safer for everyone.**

## MORE INFORMATION

Find out more about these recommendations in our **Residential Traffic Guidebook** or by visiting the Neighborhood Traffic Safety Services website.

**GUIDEBOOK:** [BellevueWA.gov/ResidentialTrafficGuidebook](http://BellevueWA.gov/ResidentialTrafficGuidebook)

**WEBSITE:** [BellevueWA.gov/NTSS](http://BellevueWA.gov/NTSS)

